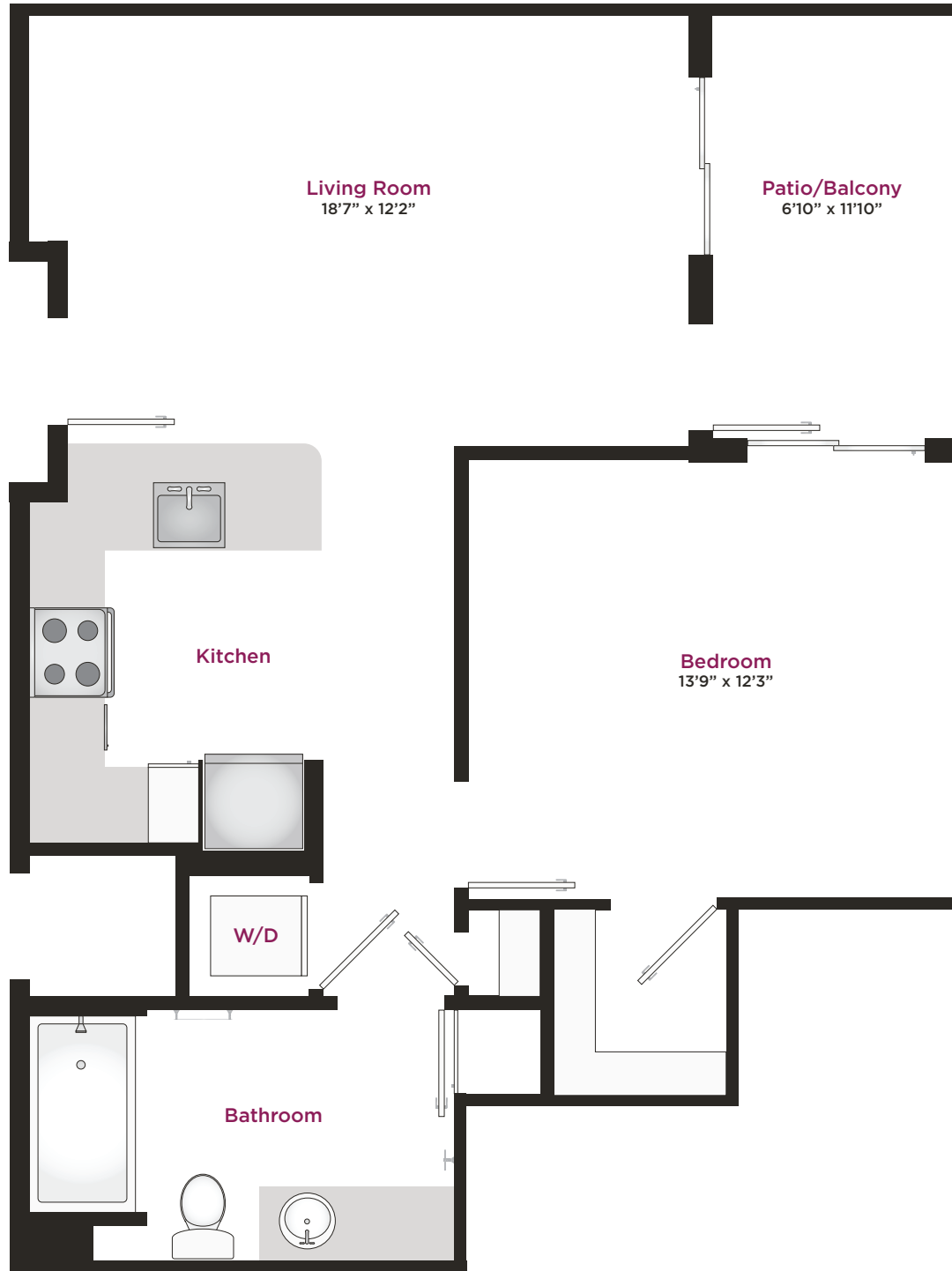


# CORE



## A4

1 Bed  
1 Bath  
759 SF



Floor plan drawings and renderings are an artist's depiction and not to scale. All images, renderings, specifications, amenities and details are subject to change without notice. Room dimensions are approximate and may vary depending on residence selected.

1815 S. Westside Drive, Anaheim, CA 92805 | [LiveAtCore.com](http://LiveAtCore.com)

